

## RPG 4.5, RPG 8.6

### Tube Squaring Machines

The clean and high value solution for specific welding preparations

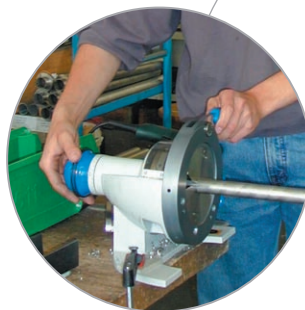
Designed for burr-free squaring of thin-walled stainless steel tubes up to OD 4.5" or OD 8.6".  
Clean and secure working area with clear view cutting head.  
Machine with removable bench stand.

#### Advantages:

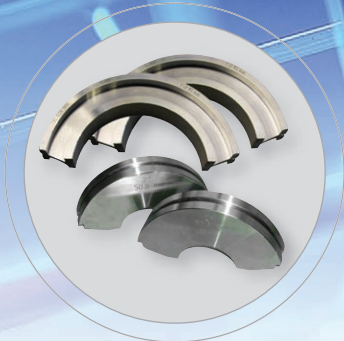
- Squaring tube ends with high-quality surface
- Burr-free and square
- Quick clamping system for tools, clamping shells and tubes
- Preparation of thin-walled stainless steel tubes (V4A)
- High-performance coated tool bit with two cutting edges
- Built-in electronic speed regulation
- Micrometer feed for optimum results
- No additional tools required for operation
- Portable machine for a mobile and secure application

#### Your benefits:

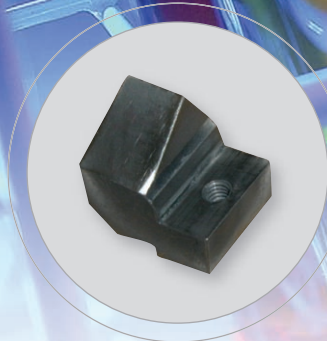
- Reduced tool costs
- Reduced manufacturing costs
- Increased productivity
- Extremely durable



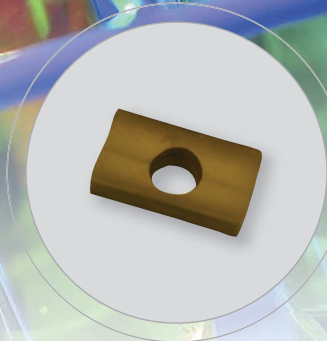
Application



A wide range of **stainless steel clamping shells** (for RPG 8.6 also made from **aluminum**). Extremely durable. The two-piece-design with click mechanism ensures accurate centring and quick clamping shell change without any tools.



Including **tool holder WH**: Usable for all RPG 4.5 and RPG 8.6 machines.  
**Code 790 038 320**



Including **multifunctional tool MFW**: Two-sided tool bit with high-performance Bali-nit® Futura protective coating against tool wear. Usable for all machines of the RPG series.  
**Code 790 038 314**



Including **durable storage and shipping case**: High-quality blue transportation case with insert. Very sturdy design.

## Tube Squaring Machines

Technical data	RPG 4.5	RPG 8.6
Dimensions	20.7 x 10 x 8.9 inch	24.8 x 15.4 x 13.4 inch
Weight (without clamping shells)	22.5 lbs	45.2 lbs
Power rating	1010 W	1010 W
Power versions	100 - 120 V, 50/60 Hz US (Code 790 038 002)	100 - 120 V, 50/60 Hz US (Code 790 039 002)
Speed (max. idling speed)	8 - 52 rpm	7 - 18 rpm
Vibration level according to EN 28662, Part 1	2.5 m/s <sup>2</sup>	2.5 m/s <sup>2</sup>
Noise level at the workplace	Idle running approx. 83 dB (A)	Idle running approx. 83 dB (A)
<b>Working range</b>		
Tube OD	0.5 - 4.5 inch	2 - 8.6 inch
Wall thickness max.	0.118 inch	0.141 inch
Tube materials	High-alloy steels, unalloyed and low-alloy steels and aluminum. Others on request.	

*The technical data are not binding. They are not warranted and characteristics are subject to change. Please consult our General Conditions of Supply.*